

SUFFOLK POLICE DEPARTMENT CRIME ANALYSIS UNIT

TO: Chief W. Freeman

FROM: Amber Warnock

SUBJECT: Crime Summary --2007

I have completed an analysis of offenses reported or known to police for the year 2007. Statistics reveal an overall decrease of 5.18%, with a decrease of 5.6% in FBI Part 1 Index Crimes for this year compared to last year. Total major crimes for this year fall below the expected threshold of 3842 incidents \pm 243 for a range of 3599 to 4085 by 472 incidents. Sector I accounted for 67.8% of major crime and Sector II 31.9% (0.3% unknown). The chart below displays crime type by zone.

	Unk	101	102	103	104	105	106	107	108	109	110	111	112	201	202	203	204	205	206	Total
Homicide	0	2	0	0	0	0	0	0	0	0	0	0	0	0	0	0	0	0	0	2
Forcible Sex Offense	1	2	1	0	3	10	4	3	1	6	4	2	3	8	10	1	4	9	2	74
Robbery	1	5	5	0	4	13	0	11	10	1	0	3	0	16	1	0	2	2	1	75
Aggrv. Assault	2	8	5	0	10	36	22	21	23	7	2	1	2	14	3	2	6	12	4	180
Burglary	0	42	10	5	23	41	29	40	30	22	39	10	14	52	13	14	11	20	25	440
Larceny	4	143	269	15	114	134	102	106	126	96	49	58	29	227	71	53	48	129	83	1856
M V Theft	0	8	3	2	7	13	8	10	7	2	9	6	5	12	4	1	3	4	4	108
Arson	0	0	0	0	1	0	0	3	2	2	0	0	1	1	0	1	1	1	2	15
Total By Zone	8	210	293	22	162	247	165	194	199	136	103	80	54	330	102	72	75	177	121	2750
% of Crime	0.3%	7.6%	10.7%	0.8%	5.9%	9.0%	6.0%	7.1%	7.2%	4.9%	3.7%	2.9%	2.0%	12.0%	3.7%	2.6%	2.7%	6.4%	4.4%	100%

	Unk	101	102	103	104	105	106	107	108	109	110	111	112	201	202	203	204	205	206	Total
Firearm Offenses	4	7	4	2	18	44	8	27	19	3	7	5	1	8	4	4	7	5	7	184
Drug Offenses	2	20	17	1	42	108	20	67	59	14	5	2	2	25	6	4	7	23	12	436
Total By Zone	6	27	21	3	60	152	28	94	78	17	12	7	3	33	10	8	14	28	19	620
% of Crime	1.0%	4.4%	3.4%	0.5%	9.7%	24.5%	4.5%	15.2%	12.6%	2.7%	1.9%	1.1%	0.5%	5.3%	1.6%	1.3%	2.3%	4.5%	3.1%	100%

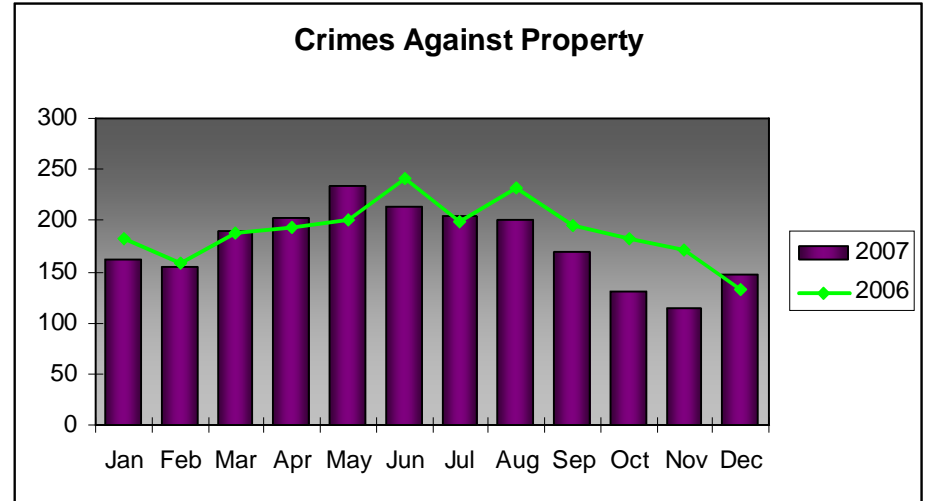
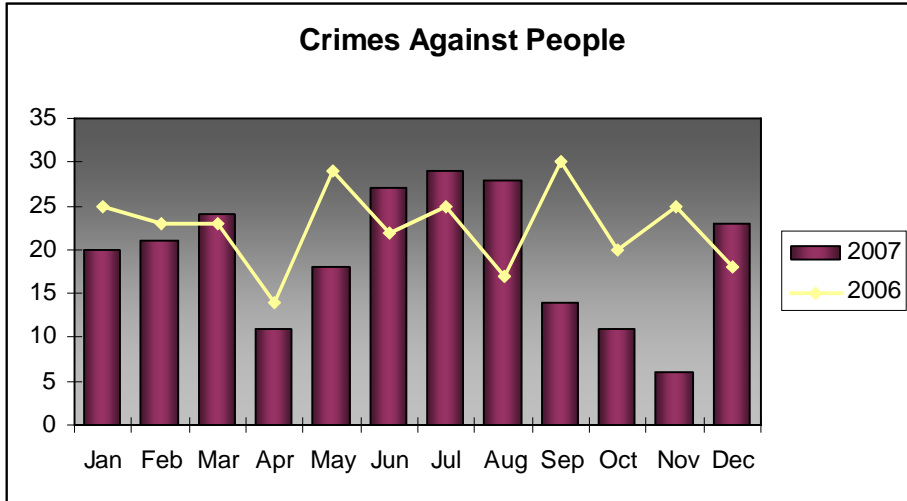
Crime by Month and Sector*

	Homicide		Forcible Sex Offense		Robbery		Aggravated Assault		Burglary		Larceny		MV Theft		Arson		Drug Offenses		Firearm Offenses	
	Sec. 1	Sec. 2	Sec. 1	Sec. 2	Sec. 1	Sec. 2	Sec. 1	Sec. 2	Sec. 1	Sec. 2	Sec. 1	Sec. 2	Sec. 1	Sec. 2	Sec. 1	Sec. 2	Sec. 1	Sec. 2	Sec. 1	Sec. 2
Jan	0	0	7	7	1	3	12	3	30	11	74	54	5	0	2	1	34	6	17	5
Feb	0	0	4	4	4	0	13	5	13	9	86	45	5	2	2	0	34	4	15	1
Mar	0	0	4	5	5	0	15	4	28	4	100	57	9	4	0	1	40	6	13	7
Apr	1	0	2	1	2	2	6	1	20	13	130	147	4	1	1	0	26	5	21	3
May	0	0	1	1	5	2	12	2	46	15	127	62	6	3	0	0	38	8	16	4
Jun	0	0	3	1	7	2	17	6	17	16	142	59	7	3	2	0	33	8	13	1
Jul	0	0	3	2	9	3	17	1	33	17	123	61	8	4	0	1	26	7	15	1
Aug	1	0	5	3	6	3	16	1	31	15	111	57	9	4	0	1	36	9	13	1
Sept	0	0	2	2	4	2	8	5	22	15	106	45	6	1	0	0	28	8	8	3
Oct	0	0	3	1	3	2	5	3	15	45	82	45	7	2	1	1	19	4	7	2
Nov	0	0	2	6	0	1	4	3	21	3	69	28	8	2	1	1	11	3	4	3
Dec	0	0	5	1	6	2	12	6	28	9	88	49	6	2	0	0	23	8	3	4
Total	2	0	39	34	52	22	137	41	305	135	1241	611	80	28	9	6	357	77	145	35

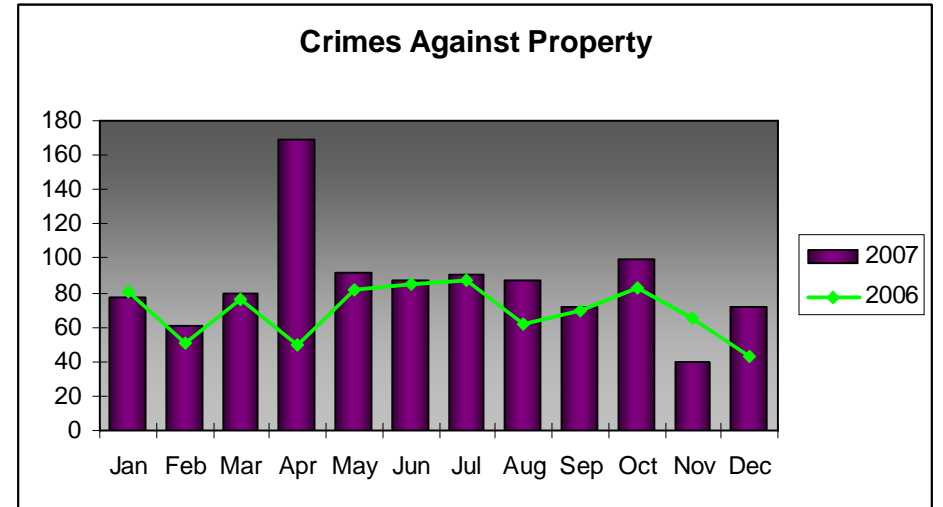
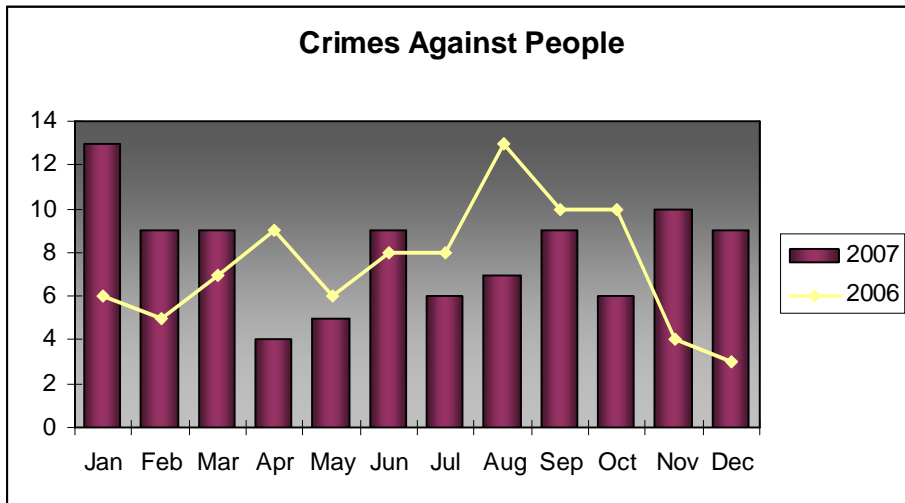
*Does not include offenses that have unspecified Sectors.

Seasonality

Sector 1

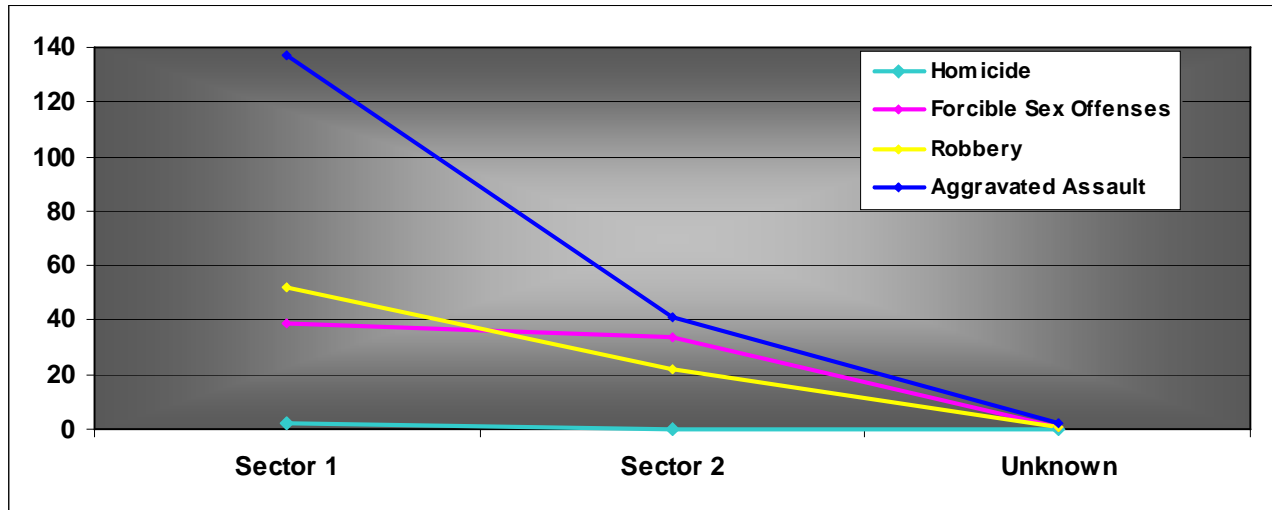


Sector 2

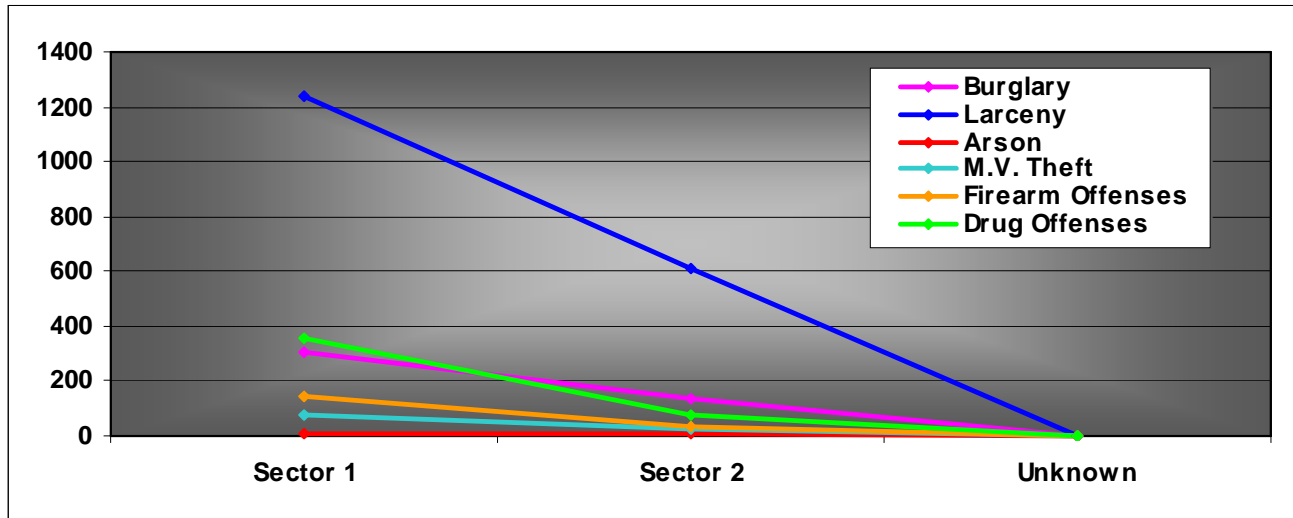


CRIME BY SECTOR

Crimes Against People



Crimes Against Property



The clearance rate (incidents cleared by arrests or exception) for FBI Part 1 Index Crimes for the 2007 is 20.4%. The clearance rate for Drug and Firearm Offenses is 73.2%.

Clearance By Offense –2007										
	Homicide	Forcible Sex Offenses	Robbery	Aggravated Assault	Burglary	Larceny	M. V. Theft	Arson	Firearm Offenses	Drug Offenses
Arrest	2	30	16	69	53	203	11	3	107	293
Exception	0	18	6	16	14	104	17	0	22	32
Open Cases	0	18	15	22	90	243	21	7	24	72
Pending Warrants	0	3	4	8	3	24	4	0	1	14
Inactive Cases	0	5	34	65	280	1282	55	5	30	25
Total Number Cleared	2	48	22	85	67	307	28	3	129	325
Total Offenses	2	74	75	180	440	1856	108	15	184	436
Total % Cleared	100%	64%	29%	47%	15%	16%	25%	20%	70%	74%

There was a decrease in major crime this year compared to last year. Forcible Sex Offenses had the largest increase from last year. Increases were also seen in Burglaries. Decreases were seen in Homicides, Robberies, Aggravated Assaults, Larcenies, Motor Vehicle Thefts, Arsons, Drug Offenses and Firearm Offenses.

Decreases are noted in the following:

Homicide: 71.43% Robbery: 24.24% Aggravated Assault: 10.45%
 Larceny: 4.97% M.V. Theft: 20.59% Arson: 42.31%
 Drug Offenses: 5.63% Firearm Offenses: 2.65%

Crime increased in the following areas by the indicated percentage:

Forcible Sex Offenses: 25.42% Burglary: 4.27%

Offense	YTD 2006	YTD 2007	% Difference	% Difference per 1000 Persons
Homicide	7	2	-71.43%	-72.17%
Forcible Sex Offenses	59	74	25.42%	22.16%
Robbery	99	75	-24.24%	-26.22%
Aggrv. Assault	201	180	-10.45%	-12.78%
Burglary	422	440	4.27%	1.55%
Larceny	1953	1856	-4.97%	-7.44%
M. V. Theft	136	108	-20.59%	-22.66%
Arson	26	15	-42.31%	-43.81%
Firearm Offenses	189	184	-2.65%	-5.18%
Drug Offenses	462	436	-5.63%	-8.09%
Total	3554	3370	-5.18%	-7.65%

Robberies, Aggravated Assaults, Larcenies, Motor Vehicle Theft, and Arsons all fell below their expected ranges. Homicide, Burglary, Firearm Offenses and Drug Offenses fell within their expected ranges. Forcible Sex Offenses did exceed the expected threshold by 8.

In the Future:

Assuming that the trend established over the past 4 years continues in the future as it has in the past, we would expect 2008 to have a total of 3650 incidents \pm 240 for a range of 3410-3890. This would include 2 - 8 Homicides, 39 - 79 Forcible Sex Offenses, 78-110 Robberies, 184-250 Aggravated Assaults, 413-483 Burglaries, 1870-2300 Larcenies, 105-137 M. V. Thefts, 16-40 Arsons, 179-249 Firearm Offenses, and 235-513 Drug Offenses.

All information is generated from computer as of this writing.

cc: Major Wilson
Captain Brooks
Captain Burch
Captain Smith
Captain Rittenhouse
Detective Bureau
Special Investigations
Patrol
Community Improvement Unit